



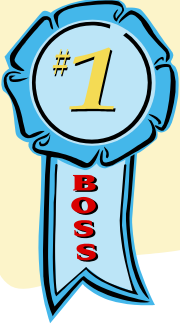
# The Grapevine/Newsletter

Phone: 9581 3421  
May 2010

Fax: 9581 3172

www.mandurahcommunitycare.org.au

## Message from the CEO - Fran Wallace, CEO



Hello Everyone, Trying to think about what has been happening within the agency that may be of interest to you is quite difficult at times. All those that have rung the office and have spoken to **“that lovely young man who answers the telephone”** well let me introduce you to **Wade**. I agree with clients that say he is an asset to the organization, he is off to Europe for 6 weeks in May and then will return to work within the organization on a more permanent basis. Other new staff in the office include **Kylie**, she has been with us for a few months and is an asset as payroll as an administrator. **WELLNESS**— the new HACC philosophy has been going well, and we are in full swing with assessment, and reviews. Some clients

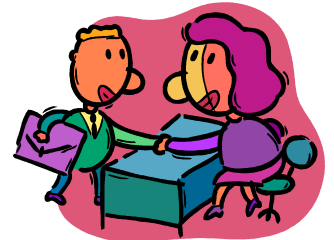
find it difficult to accept that now and in the future the agency will not be able to do everything for them in the house and garden, the expectation is that you will be required to become involved, therefore retaining your present capabilities and maybe learning some new ones, the old saying **“If you don't use it you will lose it”** comes to mind. As usual change takes a while, but as an organization we can see the benefits for the community in this new approach.

Take care of yourselves, until the next issue

Fran

## Assessment Officer – Wendy Corby

Hi to all those lovely families out there that I have had the pleasure of meeting. See I told you I wasn't scary. Thank you for allowing me into your home and making me feel welcome. And for those who I haven't got to yet, don't panic but I am on my way. I look forward to meeting you soon. Keep well and warm. From Wendy



## In Home Service Manager – Herta Ub-

Hello Everyone

I hope that you all getting more familiar with the wellness approach in Community Care, as staff will work with you and not for you to keep up your present level of capacity and improve your independence. Please have the “red in home file” ready for the staff to check your support plan. One of our male support workers, Andrew, has found employment elsewhere, we wish him well. I hope all is well and I will catch up with you at review time for your service .



Thanks Herta

**VALUES: CHARIS – TO SERVE WITH GRACE**

C-Compassionate Caring H-Harmonious Environment A-Assuring Efficiency R-Respect without Boundaries I-Independence Support S-Sustainable Resources

**MISSION: “improving the quality of life and independence of individuals and families”**

## Thoughts from our Little Book of Great Thoughts:

A time for all things  
and all things in their  
time,

Jenny Leach

\*\*\*\*

You get out of your  
children what you put  
into them.

Jenny Leach

\*\*\*\*

Life is like a roller-  
coaster...

Full of ups and downs,  
You don't know what's  
around the corner,

Expect the unexpected,  
Life is what you make  
it...

The opportunities and  
all.

Melissa Linfoot

\*\*\*\*

I believe everyone  
should practice this;  
Before you say any-  
thing about anyone,

Ask yourself:

Is it true?

Is it kind?

Is it necessary?

Shirlie Markin

\*\*\*\*



## Gardening & Home Maintenance – Roger Sutcliffe

Please note there will be a scheme water and bore water ban on Reticulation usage from the 1st June until the 31st August i.e. during the winter months. Hand watering is still permitted and bore users should test their system each month.

Before winter if you need your gutters checking please let me know.

As I have said before we are now charged by Mandurah Shire Waste Management for taking green waste to the tip and if you have any spare vouchers please let the gardeners know and they may be able to use them.

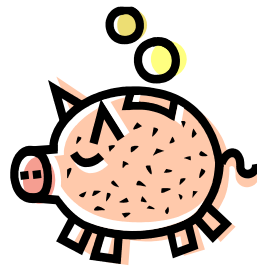
July is the normal time for pruning roses. Please give me at least 2 weeks notice of your requirements to arrange as it may involve extra time.  
Thanks Roger

## Finance – Pauline Dwyer

### If you are paying your account at the chemist

please print YOUR NAME on the envelope this helps us identify your payment.

**If you are paying your account at the office** instead of one of the chemists please ensure that you have the correct amount as we DO NOT keep cash on the premises. Thank You Pauline



## Centre Based Day Care Manager – Marj Coles

Hello all,

Future Events:

Camp at Martin Fields Busselton 6–10th September 2010

Peel Aged Games—Tuesday 19th October 2010

More information as time approaches.

Falcon Group: The library had a children's program on dancing and the children came into our group and danced with our people and all had a great time.

Marg is caravanning up North and then off to Bali for a week.

We all wish we were there too.



**VALUES: CHARIS – TO SERVE WITH GRACE**

C-Compassionate Caring H-Harmonious Environment A-Assuring Efficiency R-Respect without Boundaries I-Independence Support S-Sustainable Resources

**MISSION: "improving the quality of life and independence of individuals and families"**